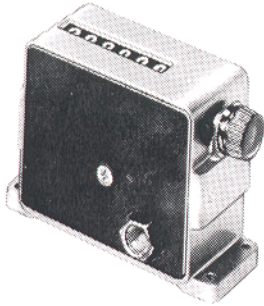


PARTS LIST
ARO PNEUMATIC LOGIC CONTROL
LOGIC FUNCTION ASSEMBLY

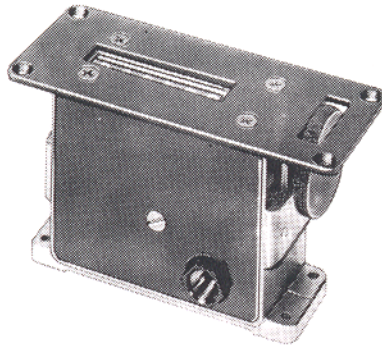
MODEL 59095-1
59095-2
59095-3

FORM 4937
REV. 5-85

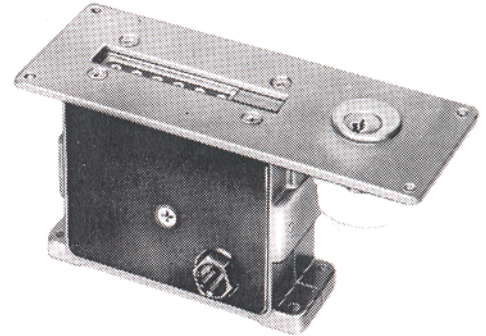
PULSE COUNTER



MODEL 59095-1



MODEL 59095-2



MODEL 59095-3

DESCRIPTION

Model 59095- pneumatic pulse counter is a six digit counter which is actuated by pneumatic pulses. Model 59095-1 is base mounted (No. 6 Screws) with a knob reset.. Model 59095-2 is panel mounted (No. 6 Screws) with a dial reset. Model 59095-3 is panel mounted (No. 6 Screws) with a key reset. (National Lock Key No. 915).

OPERATING PRESSURE RANGE

30 to 150 P.S.I.G.

TEMPERATURE RANGE

+32° F to +160°F

CYCLE RATE

Maximum cycle rate 600 c.p.m.

INSTALLATION

Pressure regulation is recommended for applications where optimum repeatability is required.

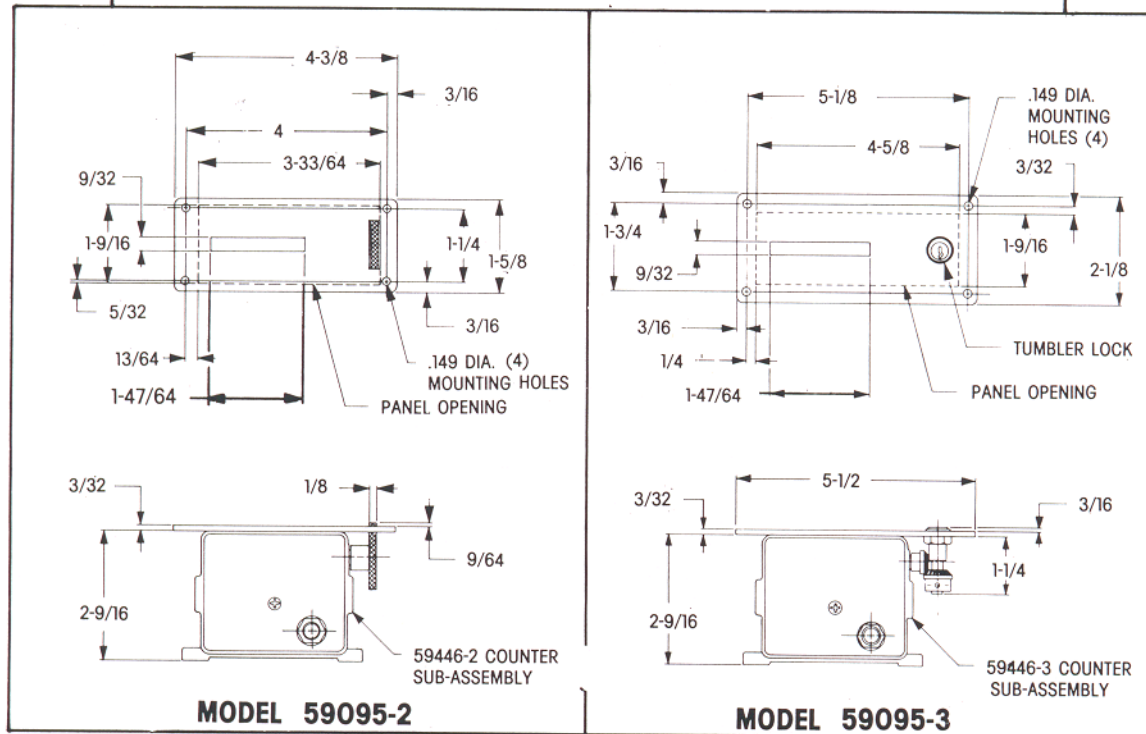
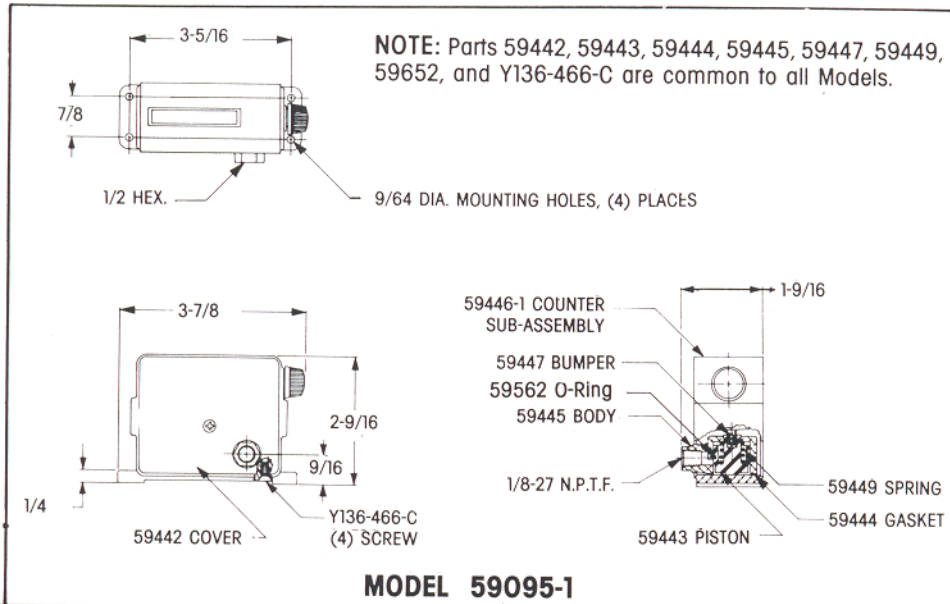
Lubrication is not required.

Filtration is recommended to assure a clean, dry air supply.

OPERATING DESCRIPTION

A pressure pulse applied to the inlet port of the counter forces 59443 piston and 59447 bumper upward causing the escapement drive clapper to pivot about its axis and drive the counter dial 1/2 digit. When the pressure pulse is discharged, 59449 spring drives 59443 piston down allowing the escapement drive clapper to return to its original position and complete the counter dial advancement.

PARTS LIST AND MOUNTING DIMENSIONS



SERVICE

In the event of a malfunction;
 Check escapement drive gear for excessive wear.
 Check 59443 piston for freedom of movement or excessive wear.
 Check 59449 spring for breakage
 Check counter drive mechanism tension spring for breakage.
 Check 59652 O-ring for imperfections if excess leakage occurs.
 Check 59444 gasket for imperfections if excessive leakage occurs.